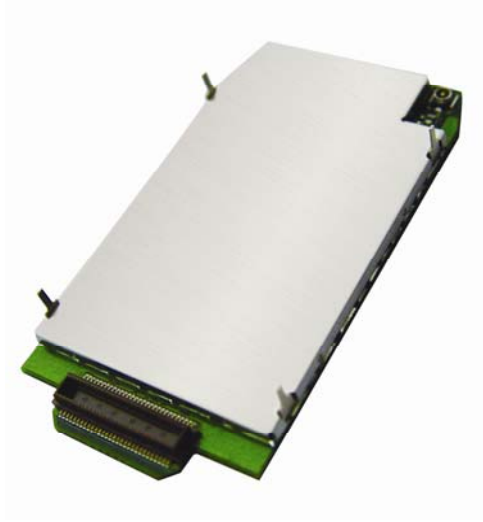


SIM305

GSM/GPRS Module Solution



The SIM305 is a complete Dual-band GSM/GPRS solution in a compact plug-in module.

Featuring an industry-standard interface, the SIM305 delivers GSM/GPRS 900/1800MHz performance for voice, SMS, Data, and Fax in a small form factor and with low power consumption.

The leading features of SIM305 make it ideal for M2M applications, such as AMR, AVL, Security, POS, etc.

- Dual- band GSM/GPRS module
- An embedded Powerful TCP/IP protocol stack
- Based upon mature and field-proven platform, backed up by SIMCOM support service, from definition to design and production

We make future wireless

General features

- Dual-Band GSM/GPRS 900/ 1800 MHz
- GPRS multi-slot class 10
- GPRS mobile station class B
- Compliant to GSM phase 2/2+
 - Class 4 (2 W @ 900 MHz)
 - Class 1 (1 W @ 1800MHz)
- Dimensions: 58.4*32.2*3.9 mm external dimensions(excluding shielding pins)
- Weight: < 12 g
- SIM application toolkit
- Supply voltage range 3.3 ... 4.5 V
- Low power consumption
- Normal operation temperature:
-30 °C to +80 °C

Specifications for fax

- Group 3, class 1

Specifications for data

- GPRS class 10: max. 85.6 kbps (downlink)
- PBCCH support
- Coding schemes CS 1, 2, 3, 4
- CSD up to 14.4 kbps
- USSD
- Non transparent mode
- PPP-stack

Specifications for SMS via GSM / GPRS

- Point-to-point MO and MT
- SMS cell broadcast
- Text and PDU mode

Specifications for voice

- Tricodec
 - Half rate (HR)
 - Full rate (FR)
 - Enhanced Full rate (EFR)
- Hands-free operation
- Echo cancellation
- AMR
 - Half rate (HR)
 - Full rate (FR)

Drivers

- MUX Driver

Interfaces

- Interface to external SIM 3V/ 1.8V
- 60 Pins Board-to-board connector
- Two analog audio interfaces
- Keypad interface
- SPI/12C interface
- RTC backup
- Two UART interfaces
- Antenna connector and antenna pad

Compatibility

- AT cellular command interface

Approvals

- GCF
- CE
- ROHS

More about SIMCom SIM305 module Please contact:

Tel: 86-21-32523300
Fax : 86-21-32523301
Email: simcom@sim.com